



FALL 2006

CES NEWSLETTER

OCTOBER 2006

PRESIDENT'S ARTICLE

INSIDE THIS ISSUE:

- **President's Article—**
Pages 1 and 2
- **Constitution and By-**
laws — Page 3
- **Emeriti Updates —**
Page 3
- **Outreach/Sister**
Chapters—Page 4
- **2005 Scholarship**
Winner — Page 4
- **Nomination Com. —**
Page 5
- **50 Years with OSUE —**
Page 5
- **Congratulations —**
Page 5
- **SAC Update—Page 6**
- **Personal Glimpse—**
Jackie Bailey—Page 6

President's Article

Dear CES Friends:

Time so quickly passes by and change of seasons is upon us! The beautiful fall foliage; pumpkin patches and apple orchards doing brisk businesses; the 2006 Ohio county fair season is officially over; “Buckeye Fever” is running rampant for our #1 team in the nation; we’ll soon be setting the clocks back an hour; our 2006 Support Staff Conference and Chi Epsilon Sigma Annual Dinner and Meeting where we’ll be celebrating our 20th anniversary!

Wow! 20 years is a long time and yet, I’m sure that to our founding members, it was only yesterday! Many things have changed in 20 years: technology is certainly ever-changing how we perform our jobs and communicate internally and to our clientele; co-workers have touched our organization with their participation in CES and many have become friends and our own support network; our own organization is ever evolving to meet the needs of our clientele and to keep current with today’s “instant” society; not to mention how we communicate internally! I doubt that any of us would be willing to give up some of the technological advances that we’ve come to rely on every day that 20 years ago didn’t exist!

The one constant in our ever-changing world is that as the professional fraternity for OSU Extension support staff, Chi Epsilon Sigma has a lot to be proud of as an organization, our accomplishments and the outstanding membership. The quality and dedication of our members and the tremendous job that those that serve on your Board of Directors never seem to waiver from year to year, board to board. We are certainly blessed with a constant flow of super-dedicated individuals and we all should be truly proud of ourselves and our organization. We’ve even been able to assist three other states to form CES chapters!

The 2006/2006 membership drive was successful! We didn’t hit our “20 for 20” mark, but we are thrilled to welcome 19 new members to our organization and a total 89 members for the upcoming year! What a great group of professional, compassionate, hard-working individuals! During my term as president, I have had the utmost support of my fellow board members and our membership and I want to thank you for your trust in my abilities and the strength that you lent me along the way.

We’re just a little over a week away from our Support Staff Conference and CES Annual Dinner and Meeting. If you haven’t registered, please be sure to go to <http://abe.osu.edu/ssc> and register no later than Wednesday, October 25th! Also, please remember that this conference is open to all Extension support staff PLUS all non-Extension support staff within CFAES so be sure to encourage everyone that you know



to attend on October 30th – 31st. Both days will be filled with a wide-variety of speakers that will offer opportunities to fill your “toolkit” with new “survival” tools for your work and personal life.

At the most recent Association President’s Meeting with Keith Smith, I presented a proposal that we begin an Excellence in Extension Award for Support Staff. Keith Smith and the other associations are 100% behind this initiative and we will be forming a committee within the next few months to establish the protocol for this award. The award will be developed to align with the other Excellence in Extension awards with two significant mutual characteristics: you must be a member of CES to be eligible for the award; and CES will partner with Extension Administration for the monetary portion of the award. I would be remiss if I didn’t acknowledge the hard work that Becky Hooper put into this proposal! I asked Becky to “put something together” as I was in the middle of Farm Science Review and she did an excellent job and had two proposals ready for the September 26th meeting! Thanks Becky!

I’d like extend a warm welcome to all of our new CES members and a “welcome back” to those members that renewed for 2006/2007. CES is growing stronger with every year and we hope to continue for the next 20 years. We look forward to the successes and challenges that the next year will bring our way. With the caliber of our membership, there’s no obstacle we can’t overcome!

As you convert to your “cold weather” wardrobe, take the opportunity to renew your commitment to yourself! Take time for you every day, even if it is just 15 minutes! We all need it and more importantly deserve it! Just like Superwoman or Superman, we modern-day “super heroes” need our own versions of kryptonite and power stones....and that just might be those 15 minutes you concentrate on yourself every day!

In closing, I’d again like to thank each of you for the wonderful year I’ve experience serving as your president. The support and encouragement from everyone involved in CES has carried me through the year! Someone was always just a phone call or e-mail away with an answer, a direction, or sounding board! The enlightenment, encouragement and enthusiasm from each of you have been a vital to me this year and even though I’ve faltered along the way, you’ve all give me your full support! Chi Epsilon Sigma helps to strengthen our connections across the state and give us a common voice within Extension and I hope that you’ll continue to carry on all of your good work!

Teresa Funk
Outgoing CES President

“In helping others, we shall help ourselves, for whatever good we give out completes the circle and comes back to us.”

Hora Edwards



CONSTITUTION AND BYLAWS

By Vickie Snyder

Newsletter Article from Past President as Chair of Constitution and Bylaws Committee.

Constitution/Bylaws Committee
A 30-Day notice was emailed to the 2006/07 membership body to prepare the way for a vote to be taken at Annual Meeting on October 30th, it read in-part: Dependant upon board approval at the October meeting...Proposed changes to the CES Constitution & Bylaws to be brought before the membership at Annual Meeting and acted upon by vote at that time:

1) ARTICLE III Section 2. Item B. (the purpose of this item being to define Emeritus Membership)

Currently reads *Emeritus - Those support staff members with emeriti status in Ohio State University Extension.*

Proposed change = Delete period and add who were active CES members in good standing at the time of retirement.

2) ARTICLE IV Section 3. (the purpose of this item being to define one-year terms for Historian and Administrative Liaison to be two-year terms)

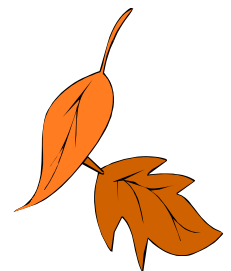
Currently reads *Each officer will serve a one-year term or until a successor is elected except Annalist and Membership Secretary, and Secretary/Treasurer. These terms will be for two years because of the detailed work involved with the duties and responsibilities. No member shall hold more than one office at a time. Officers and directors will be installed at the annual meeting. Terms of office shall begin at the close of the annual meeting.*

Proposed Change *Each officer will serve a two-year term or until a successor is elected except Staff Advisory Council Director, as this position is a 3-year position determined so by that council, and Vice President/President and Past President, as this is a 3-year successive position. No member shall hold more than one office at a time. Officers and directors will be installed at the annual meeting.*

Terms of office shall begin at the close of the annual meeting.

The first change would more clearly define those retirees to be extended emeriti status an increasing concern as our fraternity gets older and it has been recognized that CES membership may fluctuate etc. The second change would move the 2 one-year terms into a two-year term because of additional duties being added, the detailed work involved and more experience gained with additional time in that position. Once approved by the board, these changes then would be voted on at the Annual Meeting and will then be added to the Constitution and Bylaws.

Changes to the Standing Rules will include listing current committees and appointing an officer or director to chair each said committee; adding Gift Guidelines, Scholarship Guidelines, Support Staff Conference Planning Guidelines, and Excellence in Extension Award for Support Staff Guidelines.



EMERITI UPDATES

Karen Barnhart—Holmes Co. Emeriti

- I am working in a permanent position in Pinellas County for the Volunteer Services program which is a great place. I have met so many great volunteers and have the opportunity to visit all the sites where we have volunteers assigned. A majority of our volunteers are Master Gardeners at Pinellas County Extension so it makes me feel right at home.
- I do think of all of you and enjoy hearing news about the members and Extension through the newsletter.

Karon Dellinger—Franklin Co. Emeriti

- I have been away helping my son and family move to Wooster. He's been working for True Green ChemLawn as a sales person and went to their Lexington office as Marketing Manager. Moral of the story is, I'm a little behind. Now I will not only be traveling to SE Ohio to see John, but to NE Ohio also.

OUTREACH/SISTER CHAPTERS

By: Vickie Snyder

Check out the Outreach – Sister Chapters' page linked from the Home page on the CES web site. Logos have been obtained from each of our sister chapters and current president information updated. Visit each of their web sites for a new appreciation of how CES is spread over five states: Ohio- Alpha Chapter; Arkansas –Beta Chapter, Kentucky- Gamma Chapter, West Virginia –Delta Chapter, and Louisiana – Epsilon Chapter.

West Virginia has extended an invitation to our Official Board to attend their Annual Meeting next year. In reciprocation, we in turn invited all Sister Chapter's Board Members to attend our Annual Meeting on October 30th at the Holiday Inn – Worthington.

Two of the Sister Chapters have made mention of a National Meeting for Chi Epsilon Sigma. There is a need to begin chapters in more states, then this dream could become a reality!

“Hold yourself responsible for a higher standard than anybody else expects of you. Never excuse yourself.”

- Henry Ward Beecher



2005 SCHOLARSHIP WINNER



By: Kaye Clay

As an Extension employee who loves gardening and volunteering, in 2003 I pressured our Extension Educator to revitalize the Master Gardener program in Guernsey County. With six volunteers trained the first year, the program was on its way. In 2005 the county's Master Gardener Coordinator retired and the Educator asked me to accept the position of Master Gardener Coordinator for the group of 21 volunteers. I love gardening and have a love of learning, so when Secrest Arboretum offered SALSA classes, I jumped on the opportunity to attend.

SALSA, “Secrest Academy of Landscape Sciences and Arts”, is for people with an interest in an intensive, hands-on landscape horticulture learning experience. SALSA is partnered with the OSU Extension Center at Wooster and Secrest Arboretum at OARDC. Classes are held monthly for 15 months and I just completed my last class this month.

The classes were great! Each month we had both classroom and field work. I learned so much and have already used the information learned at our office. I heartily recommend both the SALSA classes and the application for scholarship monies from CES.

NOMINATION COMMITTEE

By Vickie Snyder

For the upcoming year 2006/2007 there are 8 vacancies to fill for Officer and Director positions on the Chi Epsilon Sigma Board: Vice President, Historian, Administrative Liaison, Annalist, Staff Advisory Council Director, North Central Region Director (1 of 2, even year), Southeast Region Director (1 of 2, even year), and West Region Director (1 of 2, even year).



The nominating committee: Kate Lobley, Lisa Murphy and Vickie Snyder have been working to obtain nomination acceptances and will provide a listing of the Bios in the packets at Annual Meeting. Nominations from the floor will be honored.

We encourage all CES members to consider taking on the additional responsibility of being on the board, as it provides avenues to grow personally and professionally.

50 YEARS WITH OSU EXTENSION

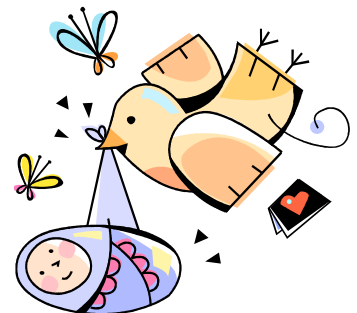


By Kaye Clay

Carolyn Parks, Extension Office Associate in Muskingum County celebrated 50 years on the job in August. Carolyn was interviewed for the local tv and recognized at an Open House at the office. Carolyn commented when she began all work was done on typewriters.

CONGRATULATIONS!

- **Kim & Mike Stover** on the birth of their son, Jackson Stover on October 17. Kim is 4-H Office Associate in Fayette County.
- **Kate & Lincoln Lobley** on the birth of their son, John Harlen on October 8. John weighed 6 lbs., 3 oz and was 19 1/2 inches long. He joins sister, Maggie, 3. Kate is Office Associate with OSU Leadership Center and also CES Campus Director.



CFAES STAFF ADVISORY COUNCIL UPDATE

By Teresa Funk

Staff Appreciation Week (August 21- 25) was a success this past summer with cookies being distributed through our Regional Directors to all County and Regional offices, and ice cream distributed on both the Columbus and Wooster campuses. We realize that there are difficulties due to the large geographic territories that our Regions cover, but we hope that you were able to enjoy some “treat” as part of Staff Appreciation Week. For future Staff Appreciation celebrations, please feel free to submit suggestions to your next Staff Advisory Council representative.

Day with the Dean - The 2006 Day with The Dean was held on September 19, 2006 at Farm

Science Review. Two CFAES staff members spent the day with Dean Moser and got the feel for what it takes to be in his shoes!

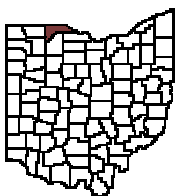
Work still is being done to implement the Professional Development Fund through Campus Campaign along with a display highlighting SAC's commitment to you, CFAES's staff.

Please remember to bring any ideas or issues that you would like taken before the Staff Advisory Council to your new SAC representative that will be elected at our Annual Meeting on the 30th to serve a 3-year term.

I would like to thank you for your confidence in allowing me to serve as the CES representative to the CFAES Staff Advisory Council. Just like CES, your Staff Advisory Council is made up of high-performing, concerned and dedicated members of our college's “staff” whose primary focus is to make CFAES a better place to all!



PERSONAL GLIMPSE



By Jackie Bailey, Office Associate, Lucas County

Have you ever heard the phrase “**don't worry.. it's only temporary!**”.. Well for me, that phrase was not true. I began my employment “**as a temporary with Kelly Services**” assigned to the Lucas County Extension office back in June of 1989. My boss at that time had a temporary from the same agency I was working with.. *who only lasted one half of the day.. she left for lunch and never came back.* I was called “*to the rescue*” at the last minute to assist in a time of crisis for 4-H with last minute camp and fair activities. Little did I know back in early summer 1989, that “**that it's only temporary**” aiding and coming to “the rescue” for last minute crunch projects would still be part of my job 17 years later in the year 2006. (I was officially hired with OSU Extension in August 1989.)

Since 1989, I have worked with 4-H, Agriculture, and FCS program leaders and County Director, as well as EFNEP and FNP Program Assistants. I currently prepare work for 8 Lucas County Staff (considering when I started in 1989 our office had 4 secretaries, now there is just me).

I was born and raised in Pittsburgh, Pennsylvania and have lived in Toledo, OH for 23 years. I have 2 children, Jeffrey (age 16) and Keesha (age 26) and one adorable, intelligent, precocious grandson Marquis (age 7).

I enjoy reading, having my grandson spend every other weekend with me, and love shoes. I also am a Pittsburgh Steelers fan, and can't understand why my supervisor is a Bengals fan! Go Steelers!