

OPPORTUNITY, EFFICIENCY, & EXPANDED SERVICES

Proposal:
**Ohio Joint Council of
Extension Professionals (JCEP)**

INTRODUCTION

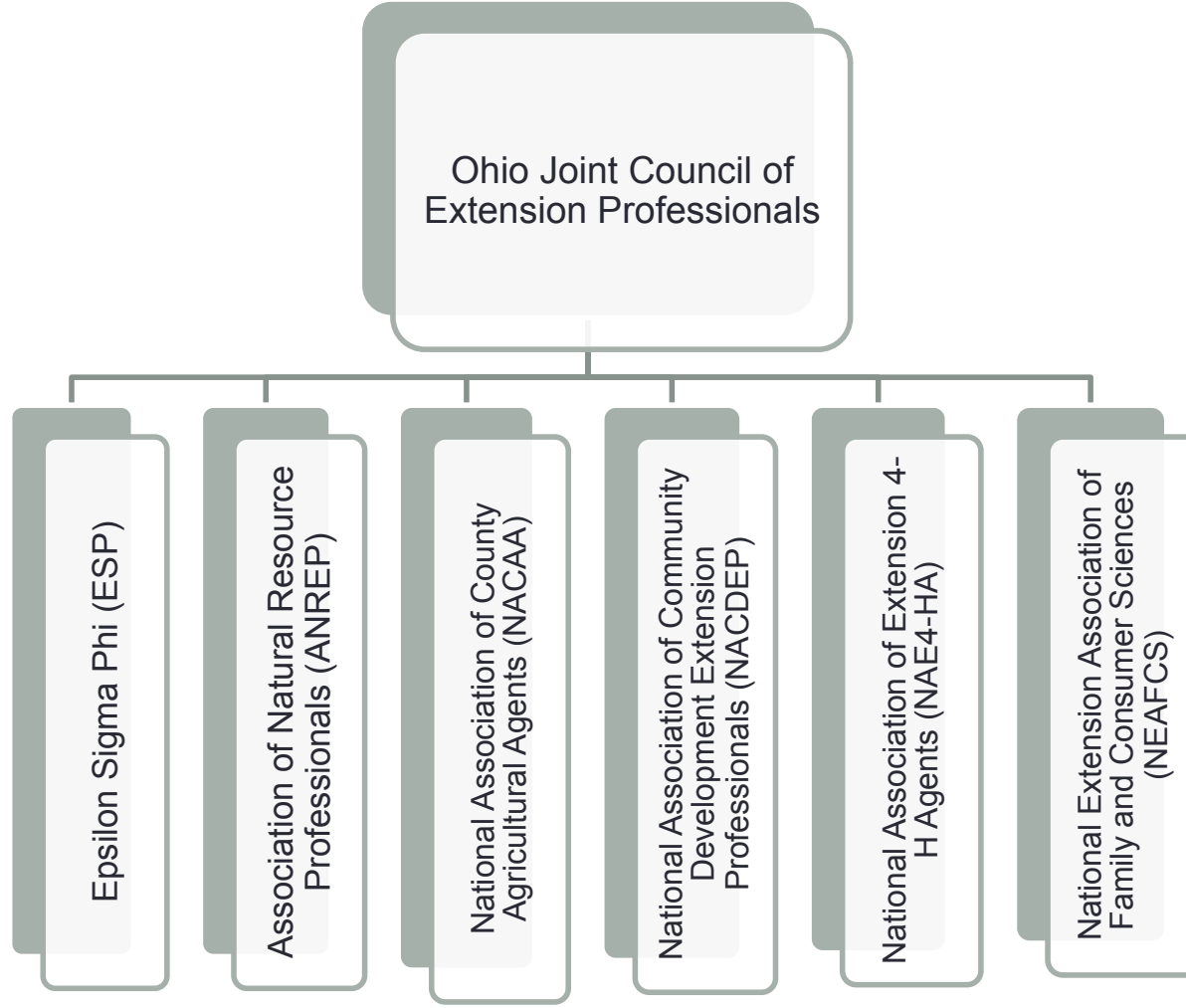
How it all began...

- Conversation: Association Leaders
 - Epsilon Sigma Phi
 - Ohio Association of Extension Professionals
 - Chi Epsilon Sigma
- Steps taken to date...
 - Fall / Winter 2011 – Conversation began, with intent to meet for discussion in early 2012
 - January 23 – Held initial discussion, explored opportunities, individuals were assigned organizational aspects to evaluate
 - February 13 – Met face-to-face to add detail to the JCEP concept
 - March 26 – WebEx to introduce OAEP, CES, and ESP Boards to JCEP concept
 - April – CES Board decides not to pursue JCEP
 - May – OAEP and ESP Boards decide to move JCEP vote to membership

Reasons for Consideration...

- Reduce duplication of efforts
 - Combined Committees
 - Smaller Board of Directors
- New, Simplified Dues Structure
- Combined Newsletter / Communications / Marketing Effort
- Recognition of Changing Organization / Organizational Structure

Organizational Structure...



BOARD STRUCTURE

2013 Ohio JCEP Board Structure...

- **President**
 - 2012 OAEP President-Elect
- **President-Elect**
 - Elected December 2012
- **Past President**
 - 2012 OAEP President
- **Secretary**
 - 2012 OAEP Secretary
- **Treasurer**
 - Elected December of Even Years
- **Treasurer-Elect**
 - Elected December of Odd Years
- **State Presidents / Elects**
 - ANREP State President
 - ESP State President
 - NACAA State President
 - NACDEP State President
 - NAE4-HA State President
 - NEAFCS State President
- **Retiree / Life Member**
- **Committee Chairs (8)**

27 Member Board

COMMITTEE STRUCTURE

A Closer Look at Committees...

- Association members (ESP / OAEP) would serve together
- Newly proposed committees would follow ESP's national committee structure
 - Committee list consists of six which mirror ESP structure, two were added to address additional needs (Personnel and Marketing)
- Subcommittees would be established to address any critical needs held solely by one association
- Committee chairs would be selected from within the committee
- Committee chairs will serve on the Board

OJCEP Committees...

- Global Relations
- Marketing
- Membership Recruitment and Retention
- Personnel
- Professional Development
- Public Issues
- Resource Development and Management
- Scholarships, Grants, and Recognition

Committee: Global Relations

- **Components:**
 - Before consolidation this committee was unique to ESP
- **Purpose:**
 - To promote the Extension profession and professionalism worldwide; promote cultural awareness.

Committee: Marketing

- Components:

- OAEP Public Relations
- OAEP Newsletter
- OAEP Webpage
- ESP Webpage
- ESP Newsletter

- Purpose:

- This committee would publish communications used by members. It would oversee web development as well as additional technology-based member communications.
- Work closely, and clarify roles, with Membership Recruitment and Retention Committee.

Committee:

Membership Recruitment and Retention

- **Components:**

- OAEP Program Committee
- OAEP Membership Chair
- OAEP Nominating Committee
- OAEP Retirees / Life Members
- ESP Retirees / Life Members

- **Purpose:**

- To recruit, retain, and involve all eligible OSU Extension personnel; and promote and effective working relationship and spirit of fellowship among members through member education.
- (recruit new members / contact new staff members)

Committee: Personnel

- The role of this committee would be to represent member suggestions, comments and concerns.
- This committee would seek out information to support issues specific to OSUE program staff and support staff members.
- Members of Administration would not be included in serving on this committee.

Committee: Professional Development

- **Components:**

- OAEP Program Committee
- OAEP Professional Development Committee
- ESP roles in Annual Conference, Leadership Conference

- **Purpose:**

- To promote professional excellence among Extension personnel
- (promote scholarships / plan Annual Conference / honor award recipients)

Committee: Public Issues

- **Components:**

- OAEP Public Relations
- ESP work on leveraging of county funds
- PILD Conference
- Public Issues Awareness

- **Purpose:**

- To build and strengthen political and public support for Extension through consistent and targeted communication with local, state and federal decision makers and agencies and to educate and inform members about public issues affecting programs and staff.
- *This is currently under review / update by ESP.*

Committee:

Resource Development and Management

- Components:

- OAEP Audit Committee
- OAEP Finance Committee

- Purpose:

- To generate new ideas for resource development and management for professional development activities; increase funding for professional development opportunities; and review and monitor financial management plan.
- (develop budget / conduct audit / recognize donors / manage finances)

Committee:

Scholarships, Grants and Recognition

- **Components:**

- OAEP Recognition Committee
- OAEP Scholarship Sub-Committee

- **Purpose:**

- Promote and administer ESP Creative Works (formerly Tools for Teaching), Team Teaching, and Special Chapter awards; honor award recipients; promote scholarships and select recipients.

POTENTIAL JOINT BUDGET

Potential Finance Structure...

	FY13 Budget Development			ESTIMATED	
	Total Budget* FY 2012	Operating Budget* FY 2012	Endowment Budget* FY 2012	Total Budget FY 2013	Operating Budget FY 2013
CHAPTER MEMBERSHIP DUES					
Annual Members JCEP & ESP (215 @ \$90)	11,825		-	19,350	19,350
TOTAL DUES	11,825	-	-	19,350	19,350
OTHER FUND RAISING	-	-	-	-	-
ENDOWMENT EARNINGS	-			-	
TOTAL INCOME	11,825	-	-	19,350	19,350
ANNUAL MEETING	200		-	200	200
BANK CHARGES/BONDING	200		-	200	200
BOARD EXPENSES**	850		-	850	850
EMERITI	200		-	200	200
GLOBAL RELATIONS	-	-	-		-
SCHOLARSHIP, GRANTS, & RECOGNITION					
Awards	3,300		-	3,500	3,500
Scholarships	3,400		-	5,500	5,500
MEMBERSHIP RECRUITMENT & RETENTION	100		-	500	500
PROFESSIONAL DEVELOPMENT	-			-	-
MARKETING***	850			1,000	1,000
PERSONNEL	-			-	-
PUBLIC ISSUES	-		-	50	50
RESOURCE DEVELOPMENT & MANAGEMENT	-		-	-	-
OUT OF STATE MEETINGS			-		
PILD Conference	3,500		-	5,000	5,000
Regional JCEP Conference	3,000		-	4,200	4,200
TOTAL OUT OF STATE MEETINGS	6,500	-	-	9,200	9,200
TOTAL EXPENSES	15,600	0	0	21,200	21,200

Potential Dues Structure...

- JCEP / ESP Membership
 - Annual Dues: \$140
 - Does not include national association membership(s)
 - Includes State JCEP / State ESP / National ESP
- National Association Memberships
 - ANREP / NACAA / NACDEP / NAE4-HA / NEAFCS
 - Dues would continue at current price level

A LOOK AHEAD

Potential Timeframe...

- Board(s) Vote to Send Organizational Restructure Proposal to a Vote by their Membership
 - OAEP and ESP Boards voted to send to membership for a vote, CES decided now was not the best time for a change.
- Association Annual Meetings
 - Late August / Official vote on organizational restructuring
- OJCEP Membership Deadline
 - October 31, 2012
- Officer / Board Elections
 - November 2012
 - Nominating Committee: 2012 Association Past Presidents
- Annual Conference
 - December 5, 2012

CONSIDER
THE BENEFITS...

Top 10...

10. Simplified dues submission process.
9. There will be fewer committees so you will be able to be more actively involved.
8. Communications will be streamlined.
7. There will be more opportunity for scholarships.
6. OAEP will become Ohio JCEP and ESP will still remain as an organization that is connected with its national association.
5. Anticipate having fewer Board meetings.
4. Committee members will provide input regarding their leadership, i.e. selection of chair.
3. No more regional representatives – “draft” eliminated.
2. One organizational newsletter to find and read.
1. More bang for your buck!

FREQUENTLY ASKED QUESTIONS

FAQs...

- **What will the committees be?**

- *Global Relations, Membership Recruitment/Retention, Professional Development, Public Issues, Resource Development/Management, Scholarship, Grants and Recognition, Marketing, Personnel (no administration)*

- **Where did the committee structure come from?**

- *The committee structure of national ESP was followed with the one exception of the personnel committee. When looking at overall organizational needs and functions it was determined that JCEP could operate effectively with this structure and stay aligned with national ESP.*

FAQs...

- **How will committee chairs be identified?**
 - *JCEP committee chairs will be nominated by their peers to hold these positions and an individual may hold this position for multiple years.*
- **What is the dues structure for JCEP and the other boards?**
 - *The dues for 2012: ESP \$85 for renewal, OAEP \$55 = \$140. The proposed dues for 2013: ESP \$50, JCEP \$90 = \$140.*

FAQs...

- **What about the ESP 5-year membership requirement?**
 - *This has been an Ohio requirement and no such requirement exists at the national level. If the JCEP structure is approved then there would be no years of service requirement for Ohio ESP membership.*
- **What about regional representative positions for OAEP?**
 - *These positions will be ending in December 2012 following annual meeting.*
- **What if one of the organizations pass the JCEP structure and the other doesn't?**
 - *If OAEP votes not to join JCEP then the two organizations would continue as they are now. If ESP would vote not to join JCEP then the JCEP board would need to determine any necessary changes to the proposed structure and potential impacts on function, budget, and dues.*

FAQs...

- **How many people are both OAEP and ESP members currently?**
 - *ESP has 163 members and OAEP has around 215, with 136 being of both organizations.*
- **Do I have to join ESP if I pay my JCEP dues?**
 - *Both organizational memberships are included in the annual dues (\$140 for JCEP/ESP) so you would hold dual membership.*

FAQs...

- **What does administration think of this new JCEP structure and process?**
 - *Extension Administration has been made aware of these conversations and is highly supportive of efforts that will maximize resources and better support our Extension professionals.*
- **Will staff lose their voice from within OAEP and the Personnel Committee?**
 - *No. This committee will remain within JCEP and be restricted to non-administrative positions.*

FAQs...

- **What duplication are we eliminating?**
 - *All organizations were doing newsletters, scholarships, awards, professional development, etc. and this provides a committee structure that will incorporate all of these and be able to send one message out to the entire organization.*
- **What happens to current board member positions within the three organizations?**
 - *ESP will continue to operate a separate board although with significantly reduced committee structures. Those on the OAEP board will fill the JCEP board positions for 2013 and open elections will be held for vacant and ongoing positions.*

FAQs...

- **Can Extension administration join Ohio JCEP?**
 - *Yes, except for the Personnel Committee.*
- **Are there limits on the number of people on a committee?**
 - *No. But active participation in committees will be emphasized and those not active will be removed.*
- **Where is the \$ going from each of the organizations?**
 - *ESP will maintain their finances and OAEP will transition its finances into the operating funds of the JCEP. Changes in dues will take place to reflect new responsibilities that JCEP will assume with managing committees.*

Additional Questions...

THANK YOU...

Thank you for
dedicating your time and talents!